

iPlantForest

Visit us: www.iPlantForest.com

ir.iPlantForest.com

www.AutoAgroMachines.com

Who we are?

iPlantForest Group (Mahogany Roraima, Floresta S/A, A.I. quimist, AutoAgroMachines)

AgTech - Forests and nurseries

Own Management System

Autonomous Machines

Artificial intelligence



Eu planto Floresta, e você?

Project

Recover areas with environmental liabilities

Produce Forest Replacement Credits

Zero carbon footprint

Produce wood and other riches



Eu planto Floresta, e você?

Deforestation and Law 12.651/12

- ▶ Forest Code, Art. 26, § 4 The application for authorization of suppression... shall contain, at a minimum..., Item II - forest replacement or compensation...
- ▶ Is the State complying with Law 12,651 of 5/25/2012 or using MMA IN 06 12/15/2006?
- ▶ Vegetation Suppression License for Alternative Soil Use without Replacement or Compensation is not valid.
- ▶ Without valid Vegetation Suppression, Installation and Operation License are not valid.
- ▶ Art. 33, § 1 Individuals or legal entities that use forestry raw material derived from the suppression of native vegetation are obliged to reforest...



Recover deforested areas

- ▶ Create a clearing house for biological liabilities to reduce environmental fines (state law).
- ▶ Identify who has environmental liabilities. Monitoring.
- ▶ Government can use reforestation as a solution. Law 12.651/12 - Cap. X, The program to support and encourage the preservation and recovery of the Environment, Art. 41.
- ▶ Whoever recovers the deforested areas will be able to reduce the environmental fine and mitigate the civil or criminal proceedings resulting from the crime.
- ▶ Offer services for the recovery of degraded areas with resources from the Government, Funds or landowners with liabilities. Law No. 12,727, OF OCTOBER 17, 2012.
- ▶ Planting of native and/or exotic depending on the case.



Produce Forest Replacement Credits

- ▶ Encourage forest promotion with financing from Banks, Government or Funds.
- ▶ Our forests have 99.999% seedlings converted into trees.
- ▶ Plant forests to produce CRF (Forest Replacement Credit).
- ▶ Plant suppression licenses need a CRF to be valid.
- ▶ Charcoal production needs CRF.
- ▶ Those with environmental liabilities need a CRF to offset liabilities.
- ▶ Revenue from the sale of CRF is shared with the landowner.



Zero Carbon Footprint

- ▶ Plant Native, Exotic, Native/Exotic, Fruit and/or Ornamental.
- ▶ Plant an average of 30 trees per inhabitant.
- ▶ The loss of seedlings in our system is only 0.0001%.
- ▶ The State that encourages the planting of forests can zero the carbon footprint of its inhabitants.
- ▶ Companies or individuals that plant or finance the planting of trees can zero their carbon emissions.
- ▶ Let's build a State with Zero Carbon Emissions, or, Zero Carbon Footprint.



Fonte: <https://ourworldindata.org/co2-and-other-greenhouse-gas-emissions#per-capita-co2-emissions>



Eu planto Floresta, e você?

Wood for cutting

- ▶ Planting forests is a solution to illegal logging.
- ▶ Our planting method has the highest percentage of conversion of seedlings into trees. Much superior to the “muvuca” system that converts less than 4%.
- ▶ Planted areas can be replanted after clear cutting to produce more wood.
- ▶ Approximate cost per hectare ranges from R\$30,000 to R\$50,000/ha.
- ▶ Exotic tree cuts can be 8, 10, 12, 18 or more years old.
- ▶ The harvest revenue will be shared with the landowners.
- ▶ Expected revenue: approximately R\$ 400 thousand/ha.
- ▶ Stakes, fences, etc can be produced legally with this project.



How do we work?



Forest.Bot

Plants up to 1,800 seedlings/hour, irrigates, georeferences the seedlings, uses AI to check planting quality, works with 2 operators, plants in renovation and installation areas.

iPlantforest
and you?



Eu planto Floresta, e você?

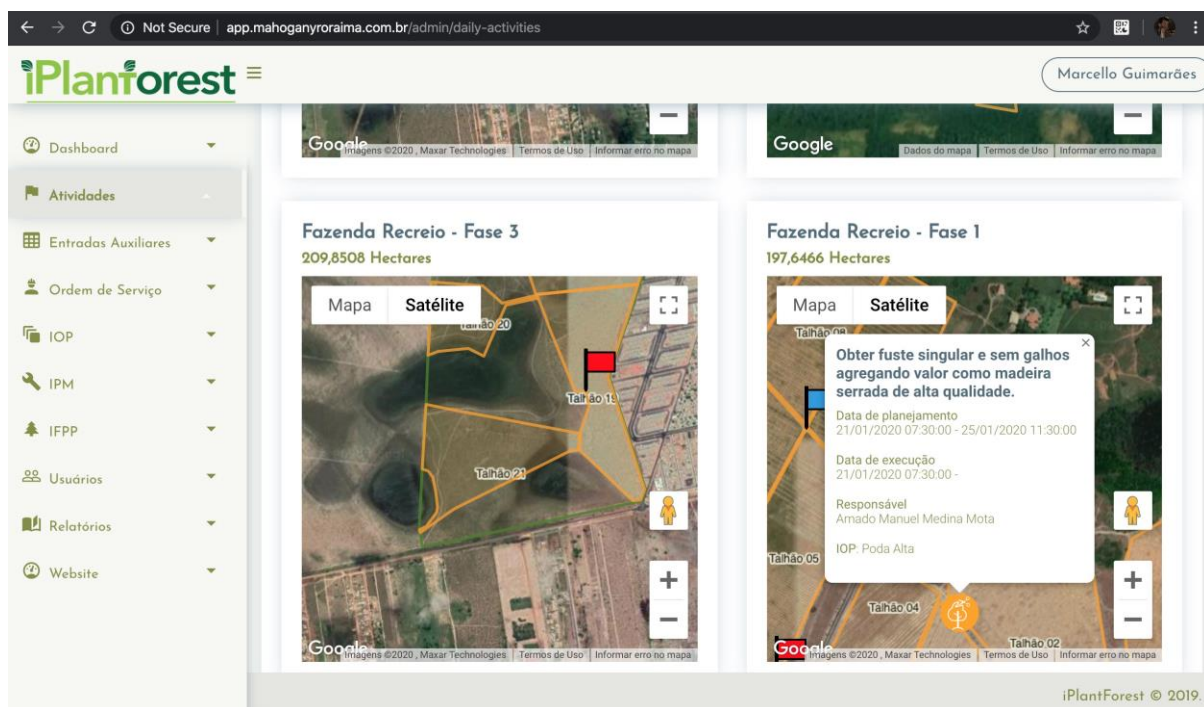
How do we work?

- ▶ The agTech iPlantForest consortium developed and built the fastest forest planting machine available today (@Forest.Bot).
- ▶ He has experience in planting forests with native and exotic seedlings, etc.
- ▶ Created germination technology that germinates a higher percentage of seeds (98%) and breaks dormancy faster.
- ▶ Each machine: Average plant of 1,800 seedlings/hour.
- ▶ Developed systems using A.I. for detection of diseases, identification of deforestation, fire, etc.



How do we work?

- Own management system to control forest nurseries and forest (planting and management) - Natives, exotics, ornamentals and fruit trees.



Control by maps, S.O., SOIs...

Images



Forest.Bot



Images



Seedlings planted by machine (speed and quality)

Images



Partial view of the nursery in Roraima
Nursery for 6 million seedlings

iPlaniforest
and you?



Eu planto Floresta, e você?

iPlantForest

Visit us: www.iPlantForest.com

ir.iPlantForest.com

www.AutoAgroMachines.com

Marcello Guimarães

Phone: +55 95 99111-6093

email: marcello.guimaraes@iPlantForest.com

Address: Av. Eng. Luis Carlos Berrini, 1748 - CJ 201

Cidade Monções CEP: 04571-000 - São Paulo - SP - Brasil